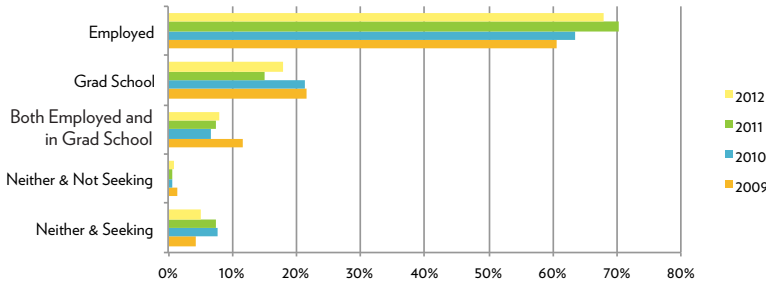


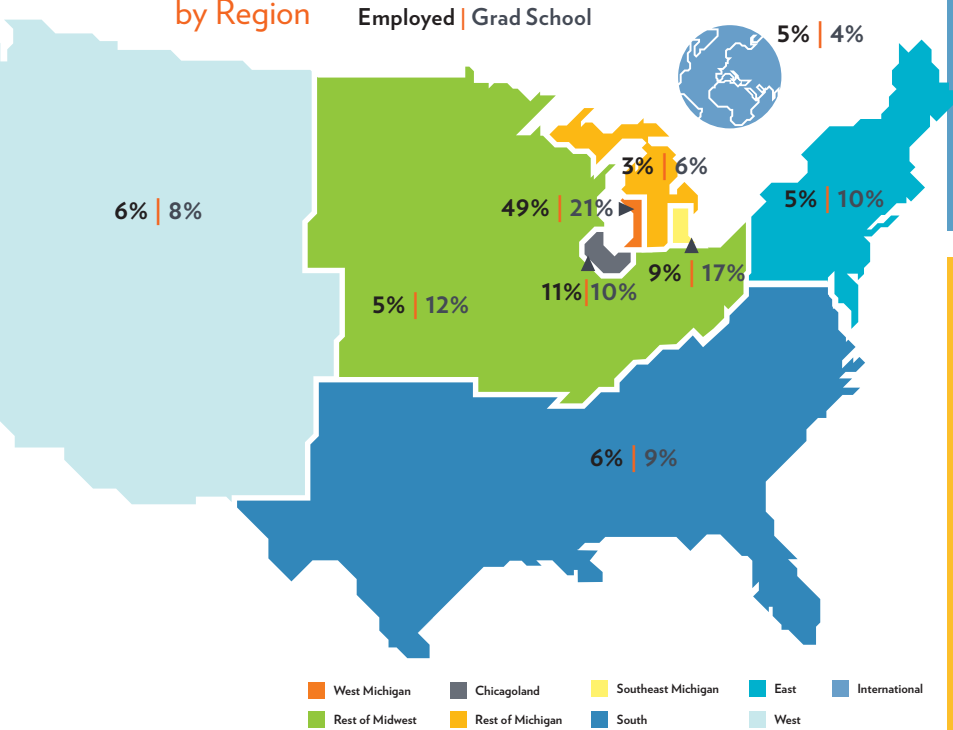
# Hope College Graduate Survey

Hope graduates are educated to think about life's most important issues with clarity, wisdom, and a deep understanding of the foundational commitments of the Christian faith. Graduates go on to do this at organizations, companies and graduate schools around the country and abroad. This summary of the annual Graduate Survey gives a six-month snapshot of the Class of 2012.

## Class Overview 2009-2012



## Employment and Graduate School by Region



## Class of 2012

**94%** Employed or in Grad School within six months



**68%**  
Employed



**18%**  
Graduate School



**8%**  
Grad School and Employed



**5%**  
Not Employed, Looking



**1%**  
Not Employed, Not Looking

### SAMPLE EMPLOYERS

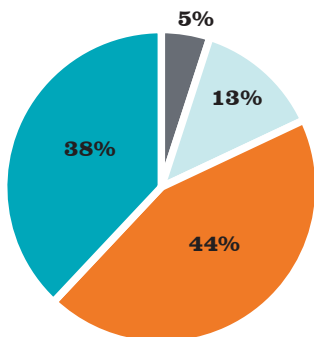
- Bethany Christian Services
- Caterpillar, Inc.
- C.S. Mott Children's Hospital
- Center for International Policy
- Deloitte
- DTE Energy
- Fulbright Program (Korea & Spain)
- Gentex Corporation
- Herman Miller
- Knolls Atomic Power Laboratory
- Michigan State Police
- New England Patriots
- Nissan North America, Inc.
- Oak Ridge National Laboratory
- Peace Corps
- PepsiCo
- Ramsey School of Ballet
- United States Geological Survey
- Van Andel Research Institute
- Yelp

### SAMPLE GRAD SCHOOLS

- Case Western Reserve
- Duke University
- Fuller Theological Seminary
- Grand Valley State University
- Johns Hopkins
- Loyola University
- University of Michigan
- Michigan State University
- Princeton University
- Yale Divinity School

## Job Satisfaction

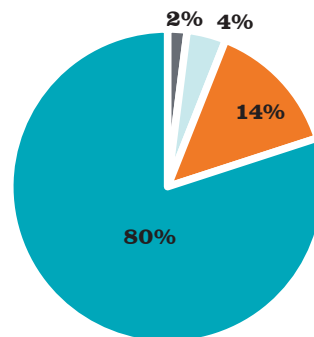
82% satisfied or very satisfied



- Very Satisfied
- Satisfied
- Neither
- Dissatisfied

## Choice of Grad School

94% in their first or second choice

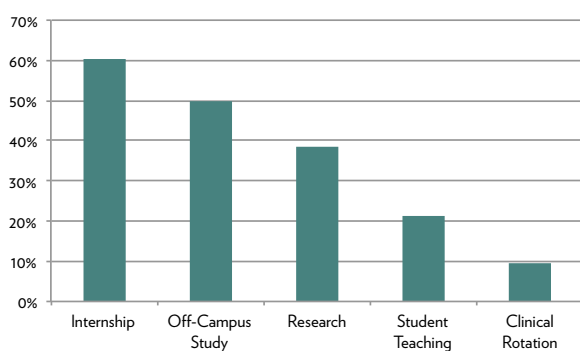


- First Choice
- Top 2
- Top 3
- Other

## Experiential Learning & Networking

- Over 80% of the Class of 2012 participated in experiential learning.
- 60% of the class had an internship experience.
- Of the members of the class that had an internship, 69% received academic credit. 31% of internships were paid.
- 22% of the class had a domestic off-campus study experience and 33% studied internationally.
- 82% of those employed are employed in their field of study.
- Academic major, the value of a Hope degree, and internship experience were cited as the top three factors contributing to employment.
- 36% of all students reported that networking connections (often with alumni) helped them secure employment.

## Experiential Learning Participation



## Top Ten Majors

Psychology (10.8% of the class)	Biology (5.7%)
Education Certified (10.6%)	Exercise Science (5%)
Management (9.1%)	Chemistry (4.2%)
Communication (6.1%)	Social Work (3.8%)
Nursing (6%)	Special Education (3.3%)

## About the Graduate Survey

The Hope College Graduate Survey is administered annually by Alumni and Parent Relations, the Career Development Center and the Office of Admissions. Graduates are contacted five to six months after graduation by email, mail and telephone and asked to complete the online survey.

During October and November of 2012, 91% (656) of the graduating Class of 2012 (724) participated in the survey.

For departmental level data and analysis or to see survey data from previous years, please contact Herb Dershem, Director of Institutional Research, at [dershem@hope.edu](mailto:dershem@hope.edu).



Office of Alumni and Parent Relations | PO Box 9000 | Holland, Michigan 49422-9000  
616.395.7250 | Fax 616.395.7899 | [hope.edu/alumni](http://hope.edu/alumni) | [alumni@hope.edu](mailto:alumni@hope.edu)

## A NETWORK OF RESOURCES

**1,000s**  
1,000s of internships a year

**\$5 MM**  
\$5 million in active grants that support student research

**200+**  
200-plus study-abroad programs in 60 countries

**31,000**  
Over 31,000 alumni in every state and over 80 countries

## Career Development Center

The Career Development Center assists students and alumni with all aspects of career planning, including choosing a major/career, exploring interests, developing effective searches, or applying to graduate schools. The primary mission of the office is to integrate academic and career interests in order to prepare students for lives of leadership and service in a global society.

Learn more at [hope.edu/career](http://hope.edu/career).

## Alumni Association

The Hope College Alumni Association hosts an online career center where you can work on your resume, join and use the Career Resource Network, volunteer, find job postings, connect with social media and sign up for events.

Connect at [hope.edu/alumni](http://hope.edu/alumni).

## JobStop

Students and alumni can browse hundreds of postings on Hope's online job board.

Start searching at [jobstop.hope.edu](http://jobstop.hope.edu).

## CONNECT WITH US

 [hope.edu](http://hope.edu)

 [facebook.com/hopecollege](https://facebook.com/hopecollege)

 [twitter.com/hopecollege](https://twitter.com/hopecollege)

 [youtube.com/hopecollege](https://youtube.com/hopecollege)